

m o o o i

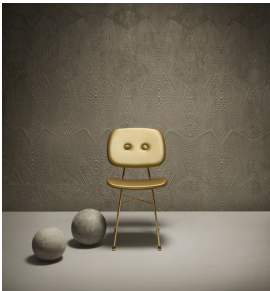
## The Golden Chair

NIKA ZUPANC



Under a mysterious magic spell, a retro-looking school chair is dipped in enchanted golden nectar, which washes away its austerity and crowns it with a shiny aureole. Isn't this a typical school-time wish, while looking out of the window and hoping for a fairytale to begin? The Golden Chair got a black framed sister in 2018, and both can be dressed in a selection of fabrics to match different interiors.

### *Detailing*



The legs of The Golden Chair are plated in real gold.

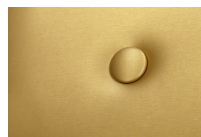
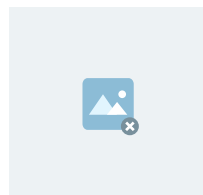
### *Colours*

Golden

CAT1

Black

Matt



# The Golden Chair / Golden Chair

## Dimensions

48 cm | 19"



37 cm | 14.5"



46 cm | 18"



86 cm | 33.9"

## Product

**WIDTH** 48cm | 18.9"

**HEIGHT** 86cm | 33.9"

**DEPTH** 37cm | 14.6"

**WEIGHT NETTO** 10.5kg | 23.15lbs

## Packaging

**WIDTH** 49cm | 19.3"

**HEIGHT** 90cm | 35.4"

**CUBAGE** 0.22m<sup>3</sup> | 7.94ft<sup>3</sup>

**LENGTH** 51cm | 20.1"

**WEIGHT** 10.5kg | 23.15lbs

---

## Technical

### ADDITIONAL

Please note that there is a golden matt version available that has a higher martindale of 200.000 which is an advantage when using the chair in larger projects.

### MATERIAL

Upholstered steel frame.

### SEAT DEPTH

37cm | 14.6"

### SEAT HEIGHT

50cm | 19.7"

### SEAT HEIGHT 2

48cm | 18.9"

### SEAT WIDTH

48cm | 18.9"

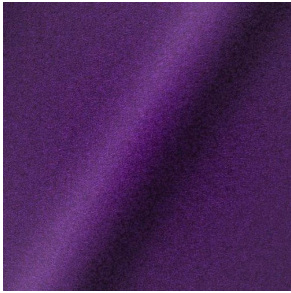
### SEAT WIDTH 2

46cm | 18.1"

---

## Upholstery

*DIVINA 3 (available in 56 colours)*



**COMPOSITION**  
100% WO

**ABRASION**  
45000 martindale  
lightfastness 7  
pilling 3

**FIRE RESISTANCE**  
BS 5852 - Ignition source  
0 (Cigarette)  
BS 5852 - Ignition source  
5 (Crib 5)  
BS 5852 - Ignition source  
1 (Match flame equivalent)  
EN 1021-1 (Cigarette)  
EN 1021-2 (Match)  
TB 117-2013  
EU Ecolabel

---

*DIVINA MD (available in 27 colours)*



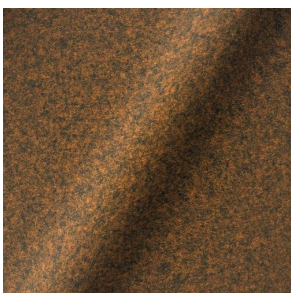
**COMPOSITION**  
100% WO

**ABRASION**  
45000 martindale  
lightfastness 6  
pilling 3

**FIRE RESISTANCE**  
BS 5852 - Ignition source  
0 (Cigarette)  
BS 5852 - Ignition source  
5 (Crib 5)  
BS 5852 - Ignition source  
1 (Match flame equivalent)  
EN 1021-1 (Cigarette)  
EN 1021-2 (Match)  
EU Ecolabel

---

*DIVINA MELANGE 3 (available in 49 colours)*



**COMPOSITION**  
100% WO

**ABRASION**  
45000 martindale  
lightfastness 6 - 7  
pilling 3

**FIRE RESISTANCE**  
BS 5852 - Ignition source  
0 (Cigarette)  
BS 5852 - Ignition source  
5 (Crib 5)  
BS 5852 - Ignition source  
1 (Match flame equivalent)  
EN 1021-1 (Cigarette)  
EN 1021-2 (Match)  
TB 117-2013  
EU Ecolabel

---

*Bearded Leopard (available in 3 colours)*



**COMPOSITION**

77% CV, 15% PES, 7% CO,  
1% PA

**ABRASION**

15000 martindale  
lightfastness 4 - 6  
pilling 4

---

*Calligraphy Bird (available in 4 colours)*



**COMPOSITION**

64% CV, 21% PES, 15%  
CO

**ABRASION**

50000 martindale  
lightfastness 4 - 6  
pilling 5

---

*Memento Moooi Medley (available in 1 colours)*



**COMPOSITION**

100% PES

**ABRASION**

50000 martindale  
lightfastness 4 - 6  
pilling 5

**FIRE RESISTANCE**

EN 1021-1 (Cigarette)  
EN 1021-2 (Match)  
TB 117-2013

---

*Menagerie of Extinct Animals (available in 2 colours)*



**COMPOSITION**

100% PES

**ABRASION**

50000 martindale  
lightfastness 4 - 6  
pilling 5

**FIRE RESISTANCE**

EN 1021-1 (Cigarette)  
EN 1021-2 (Match)  
TB 117-2013

*Rendezvous Tokyo Blue (available in 1 colours)*



**COMPOSITION**

100% PES

**ABRASION**

50000 martindale  
lightfastness 4 - 6  
pilling 5

---

*Blushing Sloth Melange Mohair (available in 1 colours)*



**COMPOSITION**

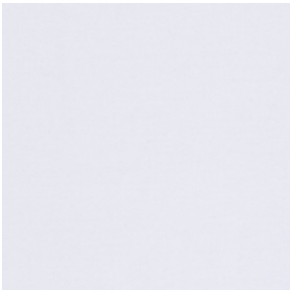
85% WV, 15% WM

**ABRASION**

15000 martindale  
lightfastness 4 - 6  
pilling 2 - 3

---

*HARALD 3 (available in 30 colours)*



**COMPOSITION**

100% CO

**ABRASION**

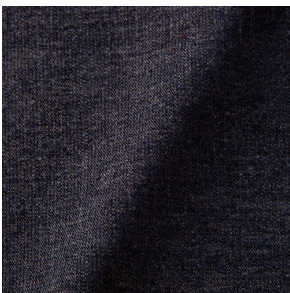
100000 martindale  
lightfastness 5  
pilling 4 - 5

**FIRE RESISTANCE**

EN 1021-1 (Cigarette)

---

*LISCIO (available in 11 colours)*



**COMPOSITION**

35% WO, 35% CV, 21%  
CO, 9% PA

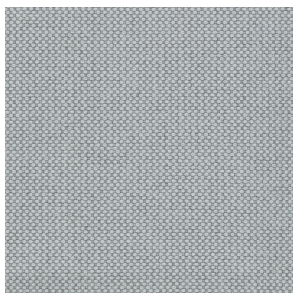
**ABRASION**

30000 martindale  
lightfastness 4 - 6  
pilling 4

**FIRE RESISTANCE**

TB 117-2013

*MERIT (available in 43 colours)*



**COMPOSITION**

24% PES, 76%

**ABRASION**

85000 martindale  
lightfastness 7  
pilling 4

---

*ORAY RAY (available in 15 colours)*

**COMPOSITION**

39% LI, 38% CV, 15% PE,  
8% CO

**ABRASION**

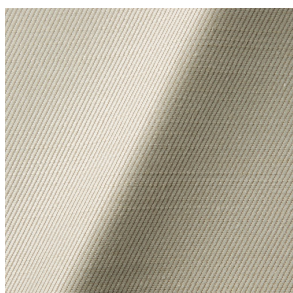
30000 martindale  
pilling 4 - 5

**FIRE RESISTANCE**

BS 5852 - Ignition source  
0 (Cigarette)  
BS 5852 - Ignition source  
1 (Match flame equivalent)  
TB 117-2013

---

*ORAY RONAN (available in 5 colours)*



**COMPOSITION**

39% LI, 38% CV, 15% PE,  
8% CO

**ABRASION**

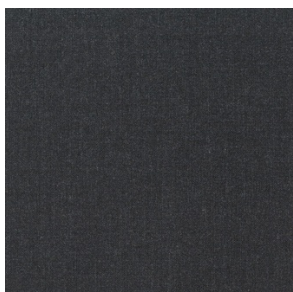
30000 martindale  
pilling 4 - 5

**FIRE RESISTANCE**

BS 5852 - Ignition source  
0 (Cigarette)  
BS 5852 - Ignition source  
1 (Match flame equivalent)  
TB 117-2013

---

*REMIX 3 (available in 53 colours)*



**COMPOSITION**

10% PA, 90% WV

**ABRASION**

100000 martindale  
lightfastness 5  
pilling 4

*SOLIS (available in 9 colours)*



**COMPOSITION**

60% WO, 30% PES, 2%  
PA, 3% PC

**ABRASION**

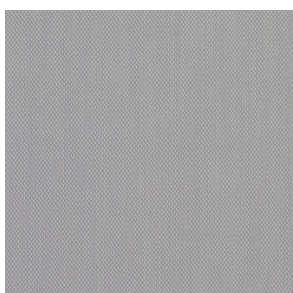
40000 martindale  
lightfastness 5  
pilling 3 - 4

**FIRE RESISTANCE**

EN 1021-1 (Cigarette)  
EN 1021-2 (Match)  
TB 117-2013

---

*STEELCUT TRIO 3 (available in 54 colours)*



**COMPOSITION**

90% WV, 10% PA

**ABRASION**

100000 martindale  
lightfastness 5  
pilling 4

**FIRE RESISTANCE**

BS 5852 - Ignition source  
0 (Cigarette)  
BS 5852 - Ignition source  
1 (Match flame equivalent)  
EN 1021-1 (Cigarette)  
EN 1021-2 (Match)  
EU Ecolabel

---